

## Contract Electronic Manufacturing

At Texmate we have long-established partnerships with leading New Zealand companies producing their PCB assemblies.

For years we've helped our customers meet their marketing objectives on time, while minimizing procurement and manufacturing costs.



▲ *Texmate's lead-free wave soldering machine*

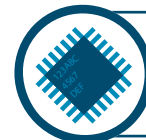
At Texmate we're committed to offering you personal service. Because of our size, we can be flexible and respond quickly to your changing needs. And it's this dedication that our customers appreciate the most about us.

Visit us online at [www.texmate-manufacturing.co.nz](http://www.texmate-manufacturing.co.nz) to find out more.

We combine the best people and technology to bring you a complete range of services tailored to your needs, from design and prototyping right through to packaged, consumer-ready products.



**Turn-key** sourcing of both components and enclosures



**SMT** and wave soldered electronic assembly



**Lead-free** assembly and assistance with RoHS compliance



**Mechanical** assembly, including mounting



**Packaging**, for consumer-ready products



**Testing**, including visual, functional and burn-in

### WHY CHOOSE TEXMATE?

**We know what we're doing.** Our experienced engineers have a thorough knowledge of our production processes and machinery.

**We're small, which makes us flexible** and able to meet your needs.

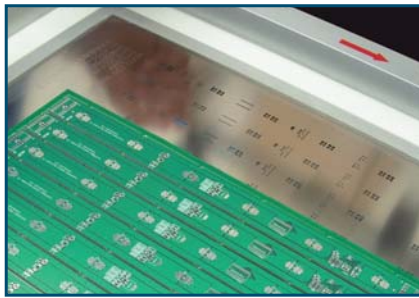
**We can guarantee you quality and competitive pricing** with our modern manufacturing facility and highly skilled staff.

**We can deliver you RoHS compliant products**, as we have the latest in lead-free wave technology. This is essential for the European and Japanese markets, and globally inevitable in the medium-term.

**We have a global resource of component suppliers.** Our partnership with Texmate Taiwan takes the hassle out of sourcing components overseas. By contacting Asian manufacturers directly, we can pass on great savings to you.

## PCB Stencil

Texmate can apply your design to PCBs, whether they're single-sided, double-sided, multi-layered or even requiring mixed technologies.



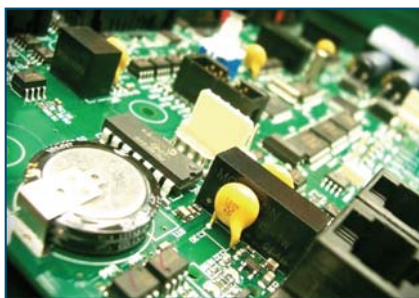
◀ A PCB & stencil

As part of our service, we'll review your design to make sure that it has reached the highest possible level of manufacturability – reducing both your manufacturing costs and the time taken to complete the job.

All of our PCB stencils are laser cut from stainless steel and mechanically printed for a high-quality, precise finish. To create a stencil using your own design, you must supply either a gerber, altium PCB or PADS file for PCB fabrication.

## SMT Assembly

At Texmate, we have modern manufacturing facilities and a team of skilled, ETITO-trained operators working to IPC610C standards.



◀ A populated PCB

As part of our commitment to high-quality SMT, we've recruited a Samsung certified SMT expert from overseas to operate our machinery.

Our SMT machines can mount components as small as 0402" (1005mm), and are currently being upgraded to place 0201 components. BGA's from 42x42mm to 0603/1608 [1-1.5mm pitch].

On complex double sided and multi-layered boards, our unique glue-dispensing process enables

through-hole components to be wave soldered, saving time and money.

As part of our QC culture we verify all stages of the SMT process using magnifying cameras, resulting in a flawless SMT assembly.

## Lead-Free Assembly



At Texmate, we have become experts in solving the unique challenges associated with waving lead-free PCB assemblies. Our state-of-the-art, lead-free wave-soldering machine guarantees a consistent, high-quality outcome, and our lead-free PCB assembly line assures compliance with RoHS standards.

Texmate can also help you transition to RoHS compliant circuit boards, and can assist you in determining if the components in your Bill-of-Materials meet RoHS standards.

We can even source lead-free components for you and send you a Bill-of-Materials with the appropriate components as part of our Turn-key lead free service.

## Component Sourcing

Because we're continually buying components for ourselves and our customers, we've developed a global resource pool of trusted manufacturers. By volume purchasing our components directly from selected Asian manufacturers, we're able to pass on great savings to you.

And you can be confident that we've found the best balance of value and quality in the components that we source, because we use them ourselves in Texmate products.



## Design Assistance

Our in-house electronic design team is experienced in designing a wide variety of electronic instruments. We can offer you assistance in hardware design, EMC compliance, and embedded software design.

PCB layout and placement of components can have a significant impact on manufacturing efficiency. For example, PCBs can be panelised too large to wave, or through-hole components can be placed in such a way that they need to be hand-soldered.



◀ A PCB design engineer at work

By working with our PCB design engineer, you can eliminate potential manufacturing problems such as these in the design stages, significantly reducing your manufacturing costs. Also, by working closely with our purchasing department, we can achieve economies of scale to reduce your component costs and lead times.

We also have pre-compliance test equipment available for your use. Many of our customers use our Tem cell testing chamber to test immunity to radiated electromagnetic fields standards. This saves them time and money in obtaining formal test certification.

## Prototyping

At Texmate, we offer a dedicated quick-turn PCB prototype assembly service for building small runs or one-off designs.

We have dedicated prototype technicians who are experienced in this highly-skilled process, and can guarantee on-time delivery of quality prototypes.



◀ A technician assembling a prototype

Our prototyping service is perfect for engineers wishing to test their designs. All prototype builds receive a manufacturability report detailing any potential manufacturing improvements.

## Testing

At Texmate, we believe that testing is an integral part of the manufacturing process.

Thorough testing now is insurance for later: simple faults that are easily fixed at the prototype stage can cost thousands of dollars in engineering time (and loss of reputation) if a flaw is detected after the product has been sold.



Assembled products in a burn-in rack ▶

We offer a full range of tests, from simple electrical testing right through to burn-in and ICT. Our engineering staff can even develop customised test procedures to suit your needs.

Testing doesn't have to involve significant outlays for capital equipment or add high costs to your product.



◀ A Texmate test-jig

By sourcing our test jigs off-shore and providing you with our ICT tester at competitive rates, we can make testing a more feasible option for you.

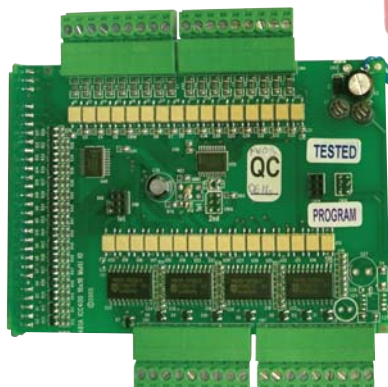
## Quality Control

At Texmate we promote a quality culture at every level throughout the company, and have developed a comprehensive approach to the management of quality issues. All staff complete mandatory ETITO and ESD training, and work to IPC610C standard quality procedures.

Our QC processes cover everything that we do, from purchasing and product records through to PCB manufacturing and testing.

Our manufacturing quality processes happen at each significant phase of production, and the boards are labelled to ensure that the product has been through every QC stage.

QC checked & labelled sample board



Our wide range of test procedures include:

- schematic and layout checks
- pre-production unit quality checklist of key inspection points
- screen printing precision checks using magnifying cameras
- component orientation and placement checks at SMT and through-hole phases
- solder condition checks for both SMT and wave
- extensive checking of the first output unit against the sample standard
- complete assembly cosmetic checks
- final QC inspection

We strive for ongoing improvement, training and personal excellence so that we can continue to deliver quality electronic assemblies.

To find out more, visit us at [www.texmate-manufacturing.co.nz](http://www.texmate-manufacturing.co.nz)

### The Electronic Manufacturing Team



**Anthony Glucina**  
Managing Director  
[anthony@texmate.co.nz](mailto:anthony@texmate.co.nz)  
021 835-162



**Anna Glucina**  
Operations Manager  
[anna@texmate.co.nz](mailto:anna@texmate.co.nz)  
021 416-835



**Gerald Costales**  
Production Manager  
[manufacturing@texmate.co.nz](mailto:manufacturing@texmate.co.nz)



**Rolla Afrogheh**  
Sales Engineer  
[rolla@texmate.co.nz](mailto:rolla@texmate.co.nz)  
021 920-835



**Wenwei Wang**  
Design Engineer  
[wenwei@texmate.co.nz](mailto:wenwei@texmate.co.nz)



10B Vega Place, Mairangi Bay, North Shore City 0632 New Zealand

PH +64 (9) 835-1550  
FAX +64 (9) 835-1250  
EMAIL [info@texmate.co.nz](mailto:info@texmate.co.nz)

PO Box 245 Westpark Village, West Harbour, Waitakere 0661, New Zealand

AUSTRALIA FREECALL  
1800 810-820

WEBSITE  
[texmate-manufacturing.co.nz](http://texmate-manufacturing.co.nz)

DOCUMENT REVISION CODE: CMO-OVR-10-V.01

